



AI-Powered Portable MRI

System Specification Summary

2.0 Hardware / 10.0 Software

BRINGING BRAIN IMAGING TO THE PATIENT

The Swoop system is an AI-powered portable MRI system that uses a magnet with a fraction of the field strength found in conventional MRI, so it can be brought to the patient's bedside and used in almost any clinical setting

TOUCH SCREEN CONTROLLER WITH MOVABLE MOUNT

Operated wirelessly via an 11-inch Apple® iPad®, mounted on an articulating arm and fully detachable for flexible use

POWER DRIVE WITH JOYSTICK

Five speed options allow easy maneuvering through crowded spaces and doorways

CONNECTIVITY

- Wi-Fi
- Ethernet
- Secure PACS configuration



56.75 × 32 × 56.5 INCHES (H × W × D)
APPROX. 1400 POUNDS

5 GAUSS GUARD

Quick expansion to 52 × 67 inches and bilateral deployment for use during storage

RF SHIELD

Partially blocks external electromagnetic interference, eliminating the need for additional shielding while front and rear doors allow easy access

HEAD COIL

8-channel receive/1-channel transmit head coil encased in durable, easy-to-disinfect polycarbonate plastic

PATIENT BRIDGE

Patient transfer bridge facilitates easy patient loading up to 440 pounds and folds up for compact storage

MAGNETICS

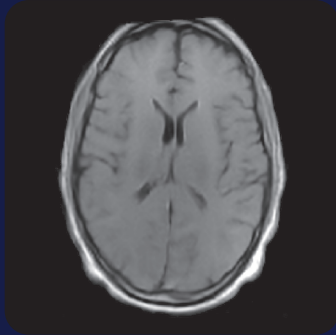
- Permanent magnet
- 0.064 tesla (64 mT)
- No helium cooling required
- No projectile risk
- No additional shielding requirements

POWER

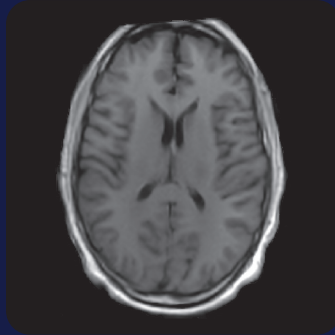
- Peak power consumption: 950 watts, 15 amps
- Plugs into standard wall outlets
- Voltage: ~100–230 VAC, 50/60 Hz
- Includes independent battery for transport

OPTIVE AI™

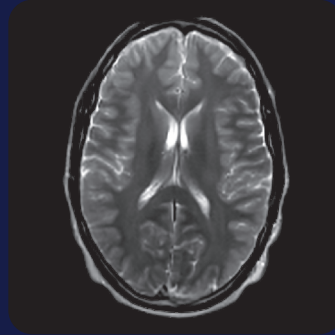
Optive AI software brings advanced, AI-driven image reconstruction to ultra-low-field MRI—unlocking clearer images at lower field strengths. By reducing noise and blur with deep learning, it enhances image clarity and uniformity to support confident diagnoses at the point of care



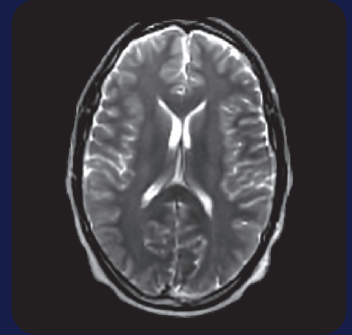
T1 (Standard)
3:30 min. | $1.6 \times 1.6 \times 5$ mm



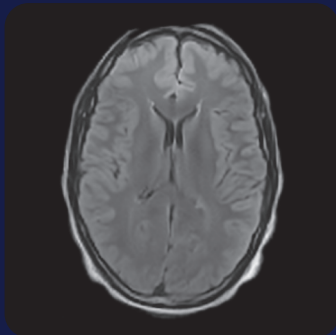
T1 (Gray/White)
5:10 min. | $1.6 \times 1.6 \times 5$ mm



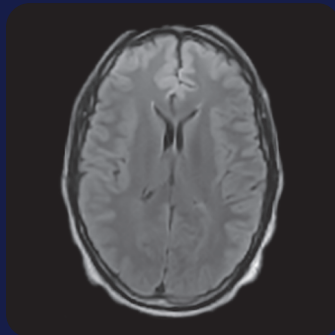
T2
6:10 min. | $1.3 \times 1.3 \times 5$ mm



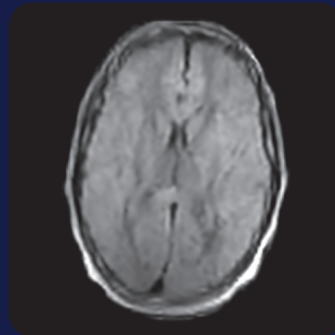
Fast T2
2:30 min. | $1.6 \times 1.6 \times 5$ mm



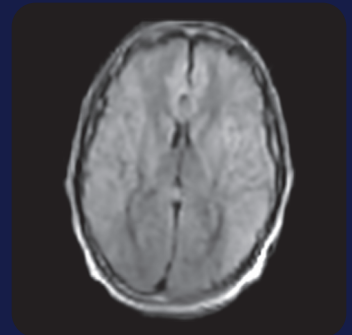
FLAIR
9:40 min. | $1.5 \times 1.5 \times 5$ mm



Fast FLAIR
6:20 min. | $1.7 \times 1.7 \times 5$ mm



DWI with ADC Map
8:40 min. | $2.2 \times 2.2 \times 5$ mm



Fast DWI with ADC Map
5:50 min. | $2.4 \times 2.4 \times 6$ mm

Sequence specifications are subject to change with future software updates (10.0 software shown above). Scan time is nominal and can slightly change depending on the acquisition plane (Axi/Cor/Sag). The nominal scan times reported are for axial plane acquisition.



REIMBURSED UNDER EXISTING IMAGE CODES

| MRI Brain without contrast: CPT 70551



CLINICAL UTILITY

| Review publications

HYPERFINE®

Indications for Use: The Swoop® Portable MR Imaging® System (V2) is a portable, ultra-low field magnetic resonance imaging device for producing images that display the internal structure of the head where full diagnostic examination is not clinically practical. When interpreted by a trained physician, these images provide information that can be useful in determining a diagnosis.

Hyperfinemri.com

LBL-003695 v1 | Apple and iPad are trademarks of Apple Inc. The Hyperfine logo, Swoop, and Portable MR Imaging are registered trademarks of Hyperfine, Inc. The Swoop logo, Optive AI logo, and Optive AI are trademarks of Hyperfine, Inc. ©2025 by HYPERFINE, INC. All rights reserved.